

## Csavarok T-hornyokhoz, DIN 787, 12.9

Termékleírás / Termékillesztrációk

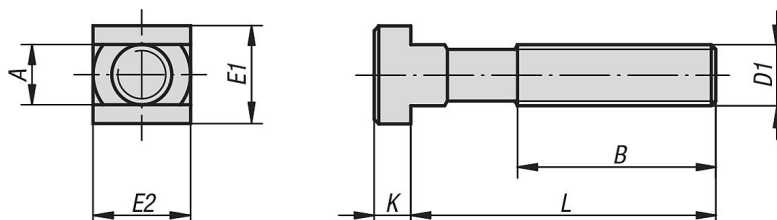


### Leírás

**Anyag:**  
Nemesacél.

**Kivitel:**  
kovácsolt, mart horony-nyak, hengerelt menet, 12.9-es minőségi osztályra nemesítve, fekete.

### Rajzok



### Termékáttekintés

#### Csavarok T-hornyokhoz, DIN 787, 12.9

| Rendelési szám | Horonyszélesség | D1  | L   | A    | B   | E1/E2 | K |
|----------------|-----------------|-----|-----|------|-----|-------|---|
| K0699.11250    | 12              | M12 | 50  | 11,7 | 35  | 18    | 7 |
| K0699.11280    | 12              | M12 | 80  | 11,7 | 55  | 18    | 7 |
| K0699.112100   | 12              | M12 | 100 | 11,7 | 65  | 18    | 7 |
| K0699.112125   | 12              | M12 | 125 | 11,7 | 75  | 18    | 7 |
| K0699.112160   | 12              | M12 | 160 | 11,7 | 100 | 18    | 7 |
| K0699.112200   | 12              | M12 | 200 | 11,7 | 120 | 18    | 7 |
| K0699.11450    | 14              | M12 | 50  | 13,7 | 35  | 22    | 8 |
| K0699.11480    | 14              | M12 | 80  | 13,7 | 55  | 22    | 8 |
| K0699.114100   | 14              | M12 | 100 | 13,7 | 65  | 22    | 8 |
| K0699.114125   | 14              | M12 | 125 | 13,7 | 75  | 22    | 8 |
| K0699.114160   | 14              | M12 | 160 | 13,7 | 100 | 22    | 8 |
| K0699.114200   | 14              | M12 | 200 | 13,7 | 120 | 22    | 8 |
| K0699.11663    | 16              | M16 | 63  | 15,7 | 45  | 25    | 9 |
| K0699.116100   | 16              | M16 | 100 | 15,7 | 65  | 25    | 9 |
| K0699.116125   | 16              | M16 | 125 | 15,7 | 85  | 25    | 9 |

## Csavarok T-hornyokhoz, DIN 787, 12.9

## Termékáttekintés

| Rendelési szám | Hornyszélesség | D1  | L   | A    | B   | E1/E2 | K  |
|----------------|----------------|-----|-----|------|-----|-------|----|
| K0699.116160   | 16             | M16 | 160 | 15,7 | 100 | 25    | 9  |
| K0699.116250   | 16             | M16 | 250 | 15,7 | 150 | 25    | 9  |
| K0699.11863    | 18             | M16 | 63  | 17,7 | 45  | 28    | 10 |
| K0699.118100   | 18             | M16 | 100 | 17,7 | 65  | 28    | 10 |
| K0699.118125   | 18             | M16 | 125 | 17,7 | 85  | 28    | 10 |
| K0699.118160   | 18             | M16 | 160 | 17,7 | 100 | 28    | 10 |
| K0699.118250   | 18             | M16 | 250 | 17,7 | 150 | 28    | 10 |
| K0699.12080    | 20             | M20 | 80  | 19,7 | 55  | 32    | 12 |
| K0699.120125   | 20             | M20 | 125 | 19,7 | 85  | 32    | 12 |
| K0699.120200   | 20             | M20 | 200 | 19,7 | 125 | 32    | 12 |
| K0699.120315   | 20             | M20 | 315 | 19,7 | 190 | 32    | 12 |
| K0699.12280    | 22             | M20 | 80  | 21,7 | 55  | 35    | 14 |
| K0699.122125   | 22             | M20 | 125 | 21,7 | 85  | 35    | 14 |
| K0699.122200   | 22             | M20 | 200 | 21,7 | 125 | 35    | 14 |
| K0699.122315   | 22             | M20 | 315 | 21,7 | 190 | 35    | 14 |
| K0699.124100   | 24             | M24 | 100 | 23,7 | 70  | 40    | 16 |
| K0699.124160   | 24             | M24 | 160 | 23,7 | 110 | 40    | 16 |
| K0699.124250   | 24             | M24 | 250 | 23,7 | 150 | 40    | 16 |
| K0699.124400   | 24             | M24 | 400 | 23,7 | 240 | 40    | 16 |
| K0699.128100   | 28             | M24 | 100 | 27,7 | 70  | 44    | 18 |
| K0699.128160   | 28             | M24 | 160 | 27,7 | 110 | 44    | 18 |
| K0699.128250   | 28             | M24 | 250 | 27,7 | 150 | 44    | 18 |
| K0699.128400   | 28             | M24 | 400 | 27,7 | 240 | 44    | 18 |